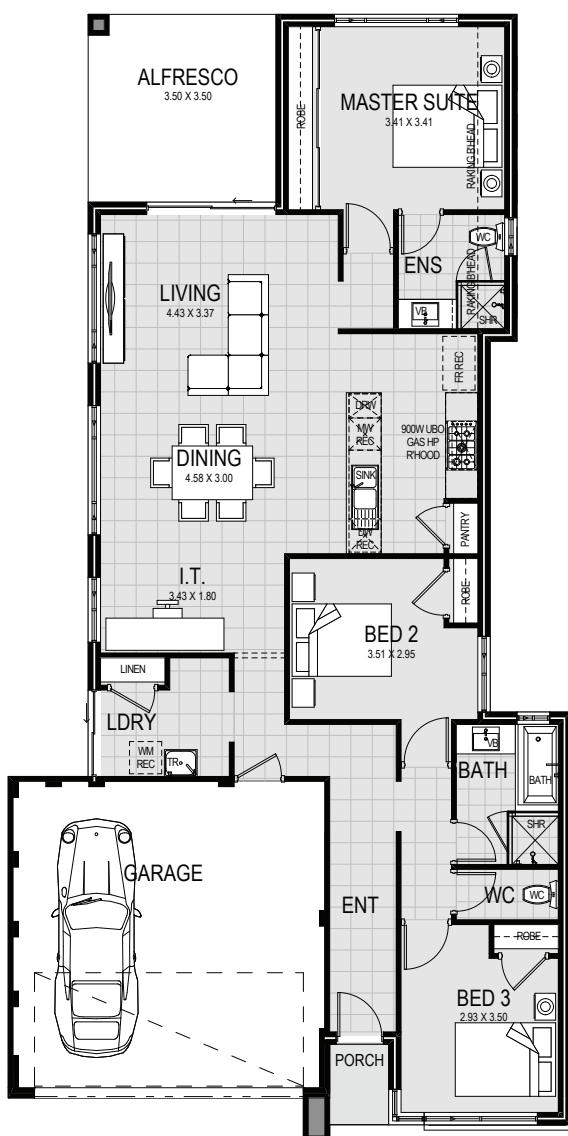




Images for illustration purposes only

The Essentials Range

Archer House and land package from \$388,950



Lot 130 Pinner Street
DAYTON
Lot Size 326m²

Living areas

House	127.29m ²
Alfresco	12.25m ²
Garage	35.03m ²
Porch	1.65m ²
Total	176.22m ²



Inclusions

- ✓ Ducted reverse cycle air conditioning
- ✓ Stone benchtops throughout
- ✓ High ceilings throughout
- ✓ LED lighting throughout
- ✓ 900mm stainless steel appliances
- ✓ Carpets to all bedrooms and theatre*
- ✓ Main area floor tiling
- ✓ Window coverings throughout
- ✓ 2m high glass pivot doors to showers
- ✓ White china basins to vanities
- ✓ Flick mixer tapware throughout
- ✓ Soft close cupboards & drawers
- ✓ Two colour render to front elevation
- ✓ 6 months maintenance period
- ✓ Lifetime structural guarantee



**Terms & conditions apply. ACL 391237. BC13070